

ELISA

MAZURKA

Musica di
D. DONADELLI
E. COMANDINI

STRUMENTI in DO - FISARMONICA

Mazurka

Sol

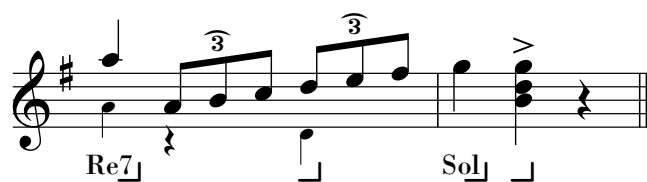
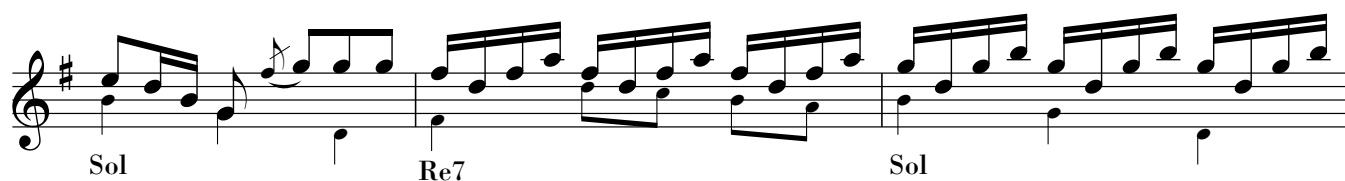
Re7 Lam

Re7 Sol

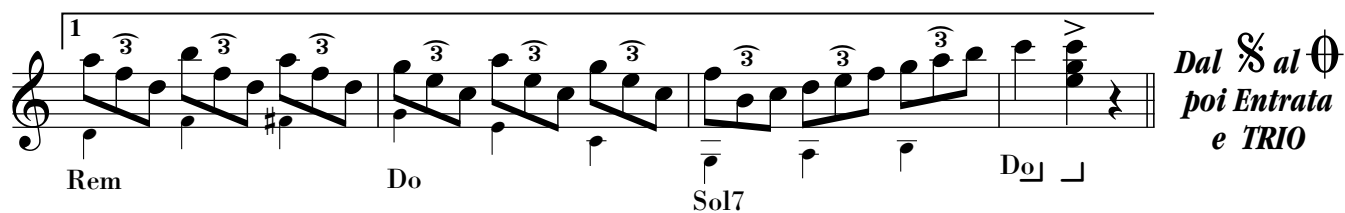
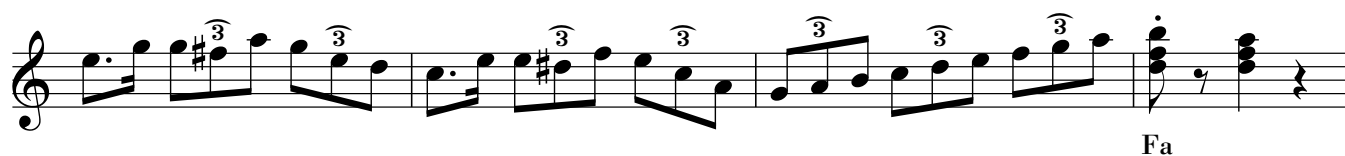
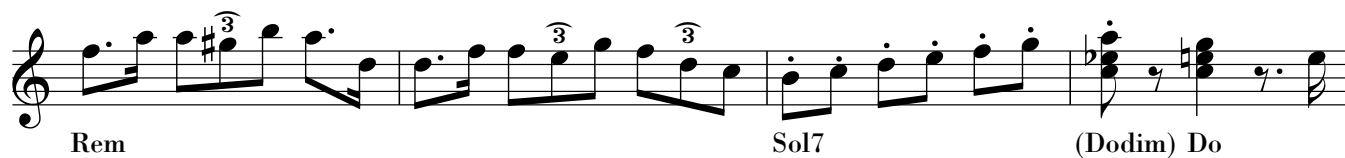
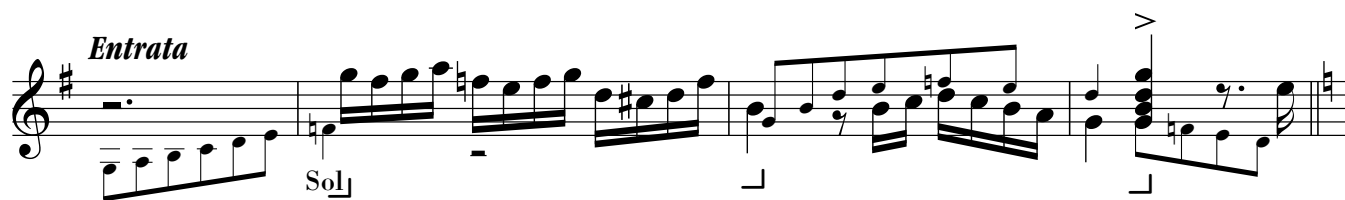
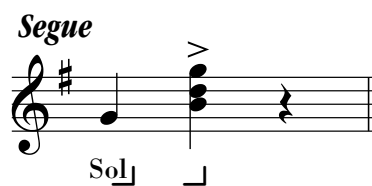
Do Lam

Sol Mi7 Lam Re7 Sol Re7 Sol Re7 Sol

Re7 Sol Re7 Sol Re7 Sol Re7 Sol Re7 Sol



*Dal $\text{\textcircled{S}}$ al $\text{\textcircled{O}}$
poi Segue*



*Dal $\text{\textcircled{S}}$ al $\text{\textcircled{O}}$
poi Entrata
e TRIO*

