

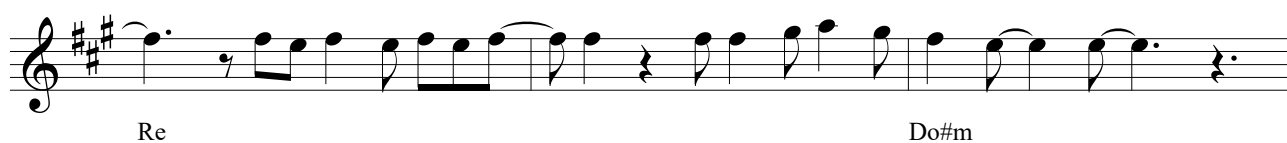
GIULIA BUTTA LA PASTA

Testo di:
D. PAIELLA

Musica di:
A.M. ALLEGRETTI - D. PAIELLA
O. LAMBERTINI

STRUMENTI in DO

Moderato



Proprietà per tutti i paesi

Edizioni Musicali SUONAMI S.a.s. Via dell'Artigianato 237/C - 40059 Medicina (BO) - info@suonami.it - www.suonami.it
NOVALIS Edizioni Musicali - Via Flaminia, 185/B - 47923 Rimini (RN) - info@novalis.it - www.novalis.it

© Copyright 2021 by Edizioni Musicali SUONAMI - NOVALIS

Diritti riservati a termine di legge per tutti i paesi del mondo. All right reserved

[illegible]

A musical staff in treble clef with a key signature of three sharps (F#, C#, G#). The melody consists of eighth notes and quarter notes, with some notes beamed together. There are two double bar lines in the middle of the staff. Below the staff, the labels "La" and "Mi" are positioned under specific notes in the sequence.

[illegible]

Do#m

La Mi La Do#m

The first line of musical notation is in treble clef with a key signature of three sharps (F#, C#, G#). The melody consists of eighth and quarter notes. The lyrics 'Re', 'La', and 'Mi' are positioned below the notes.

The musical notation shows a treble clef with a key signature of three sharps (F#, C#, G#). The melody consists of quarter notes: F#4, A4, B4, G#4, F#4, E4, D4, C#4, B3, A3, G#3, F#3, E3, D3, C#3, B2, A2, G#2, F#2, E2, D2, C#2, B1, A1, G#1, F#1, E1, D1, C#1, B0, A0, G#0, F#0, E0, D0, C#0, B-1, A-1, G#-1, F#-1, E-1, D-1, C#-1, B-2, A-2, G#-2, F#-2, E-2, D-2, C#-2, B-3, A-3, G#-3, F#-3, E-3, D-3, C#-3, B-4, A-4, G#-4, F#-4, E-4, D-4, C#-4, B-5, A-5, G#-5, F#-5, E-5, D-5, C#-5, B-6, A-6, G#-6, F#-6, E-6, D-6, C#-6, B-7, A-7, G#-7, F#-7, E-7, D-7, C#-7, B-8, A-8, G#-8, F#-8, E-8, D-8, C#-8, B-9, A-9, G#-9, F#-9, E-9, D-9, C#-9, B-10, A-10, G#-10, F#-10, E-10, D-10, C#-10, B-11, A-11, G#-11, F#-11, E-11, D-11, C#-11, B-12, A-12, G#-12, F#-12, E-12, D-12, C#-12, B-13, A-13, G#-13, F#-13, E-13, D-13, C#-13, B-14, A-14, G#-14, F#-14, E-14, D-14, C#-14, B-15, A-15, G#-15, F#-15, E-15, D-15, C#-15, B-16, A-16, G#-16, F#-16, E-16, D-16, C#-16, B-17, A-17, G#-17, F#-17, E-17, D-17, C#-17, B-18, A-18, G#-18, F#-18, E-18, D-18, C#-18, B-19, A-19, G#-19, F#-19, E-19, D-19, C#-19, B-20, A-20, G#-20, F#-20, E-20, D-20, C#-20, B-21, A-21, G#-21, F#-21, E-21, D-21, C#-21, B-22, A-22, G#-22, F#-22, E-22, D-22, C#-22, B-23, A-23, G#-23, F#-23, E-23, D-23, C#-23, B-24, A-24, G#-24, F#-24, E-24, D-24, C#-24, B-25, A-25, G#-25, F#-25, E-25, D-25, C#-25, B-26, A-26, G#-26, F#-26, E-26, D-26, C#-26, B-27, A-27, G#-27, F#-27, E-27, D-27, C#-27, B-28, A-28, G#-28, F#-28, E-28, D-28, C#-28, B-29, A-29, G#-29, F#-29, E-29, D-29, C#-29, B-30, A-30, G#-30, F#-30, E-30, D-30, C#-30, B-31, A-31, G#-31, F#-31, E-31, D-31, C#-31, B-32, A-32, G#-32, F#-32, E-32, D-32, C#-32, B-33, A-33, G#-33, F#-33, E-33, D-33, C#-33, B-34, A-34, G#-34, F#-34, E-34, D-34, C#-34, B-35, A-35, G#-35, F#-35, E-35, D-35, C#-35, B-36, A-36, G#-36, F#-36, E-36, D-36, C#-36, B-37, A-37, G#-37, F#-37, E-37, D-37, C#-37, B-38, A-38, G#-38, F#-38, E-38, D-38, C#-38, B-39, A-39, G#-39, F#-39, E-39, D-39, C#-39, B-40, A-40, G#-40, F#-40, E-40, D-40, C#-40, B-41, A-41, G#-41, F#-41, E-41, D-41, C#-41, B-42, A-42, G#-42, F#-42, E-42, D-42, C#-42, B-43, A-43, G#-43, F#-43, E-43, D-43, C#-43, B-44, A-44, G#-44, F#-44, E-44, D-44, C#-44, B-45, A-45, G#-45, F#-45, E-45, D-45, C#-45, B-46, A-46, G#-46, F#-46, E-46, D-46, C#-46, B-47, A-47, G#-47, F#-47, E-47, D-47, C#-47, B-48, A-48, G#-48, F#-48, E-48, D-48, C#-48, B-49, A-49, G#-49, F#-49, E-49, D-49, C#-49, B-50, A-50, G#-50, F#-50, E-50, D-50, C#-50, B-51, A-51, G#-51, F#-51, E-51, D-51, C#-51, B-52, A-52, G#-52, F#-52, E-52, D-52, C#-52, B-53, A-53, G#-53, F#-53, E-53, D-53, C#-53, B-54, A-54, G#-54, F#-54, E-54, D-54, C#-54, B-55, A-55, G#-55, F#-55, E-55, D-55, C#-55, B-56, A-56, G#-56, F#-56, E-56, D-56, C#-56, B-57, A-57, G#-57, F#-57, E-57, D-57, C#-57, B-58, A-58, G#-58, F#-58, E-58, D-58, C#-58, B-59, A-59, G#-59, F#-59, E-59, D-59, C#-59, B-60, A-60, G#-60, F#-60, E-60, D-60, C#-60, B-61, A-61, G#-61, F#-61, E-61, D-61, C#-61, B-62, A-62, G#-62, F#-62, E-62, D-62, C#-62, B-63, A-63, G#-63, F#-63, E-63, D-63, C#-63, B-64, A-64, G#-64, F#-64, E-64, D-64, C#-64, B-65, A-65, G#-65, F#-65, E-65, D-65, C#-65, B-66, A-66, G#-66, F#-66, E-66, D-66, C#-66, B-67, A-67, G#-67, F#-67, E-67, D-67, C#-67, B-68, A-68, G#-68, F#-68, E-68, D-68, C#-68, B-69, A-69, G#-69, F#-69, E-69, D-69, C#-69, B-70, A-70, G#-70, F#-70, E-70, D-70, C#-70, B-71, A-71, G#-71, F#-71, E-71, D-71, C#-71, B-72, A-72, G#-72, F#-72, E-72, D-72, C#-72, B-73, A-73, G#-73, F#-73, E-73, D-73, C#-73, B-74, A-74, G#-74, F#-74, E-74, D-74, C#-74, B-75, A-75, G#-75, F#-75, E-75, D-75, C#-75, B-76, A-76, G#-76, F#-76, E-76, D-76, C#-76, B-77, A-77, G#-77, F#-77, E-77, D-77, C#-77, B-78, A-78, G#-78, F#-78, E-78, D-78, C#-78, B-79, A-79, G#-79, F#-79, E-79, D-79, C#-79, B-80, A-80, G#-80, F#-80, E-80, D-80, C#-80, B-81, A-81, G#-81, F#-81, E-81, D-81, C#-81, B-82, A-82, G#-82, F#-82, E-82, D-82, C#-82, B-83, A-83, G#-83, F#-83, E-83, D-83, C#-83, B-84, A-84, G#-84, F#-84, E-84, D-84, C#-84, B-85, A-85, G#-85, F#-85, E-85, D-85, C#-85, B-86, A-86, G#-86, F#-86, E-86, D-86, C#-86, B-87, A-87, G#-87, F#-87, E-87, D-87, C#-87, B-88, A-88, G#-88, F#-88, E-88, D-88, C#-88, B-89, A-89, G#-89, F#-89, E-89, D-89, C#-89, B-90, A-90, G#-90, F#-90, E-90, D-90, C#-90, B-91, A-91, G#-91, F#-91, E-91, D-91, C#-91, B-92, A-92, G#-92, F#-92, E-92, D-92, C#-92, B-93, A-93, G#-93, F#-93, E-93, D-93, C#-93, B-94, A-94, G#-94, F#-94, E-94, D-94, C#-94, B-95, A-95, G#-95, F#-95, E-95, D-95, C#-95, B-96, A-96, G#-96, F#-96, E-96, D-96, C#-96, B-97, A-97, G#-97, F#-97, E-97, D-97, C#-97, B-98, A-98, G#-98, F#-98, E-98, D-98, C#-98, B-99, A-99, G#-99, F#-99, E-99, D-99, C#-99, B-100, A-100, G#-100, F#-100, E-100, D-100, C#-100, B-101, A-101, G#-101, F#-101, E-101, D-101, C#-101, B-102, A-102, G#-102, F#-102, E-102, D-102, C#-102, B-103, A-103, G#-103, F#-103, E-103, D-103, C#-103, B-104, A-104, G#-104, F#-104, E-104, D-104, C#-1