

# GUIDA ORCHESTRA 1 DONNA IN ROSSO

LARGO

CHARPAS

Handwritten musical score for the first system, featuring a treble and bass staff. The key signature is one sharp (F#). The tempo is marked "LARGO". The music includes vocal lines with lyrics: "RE - RE - RE - 6 sib 7 RE SOL - SOL# diu". There are also instrumental parts for woodwinds and strings.

Handwritten musical score for the second system, featuring a treble and bass staff. The music includes instrumental parts for woodwinds and strings. The tempo is marked "LARGO".

Handwritten musical score for the third system, featuring a treble and bass staff. The music includes instrumental parts for woodwinds and strings. The tempo is marked "LARGO". There are also vocal lines with lyrics: "RE - RE - RE - 6 sib 7 RE SOL - SOL# diu".

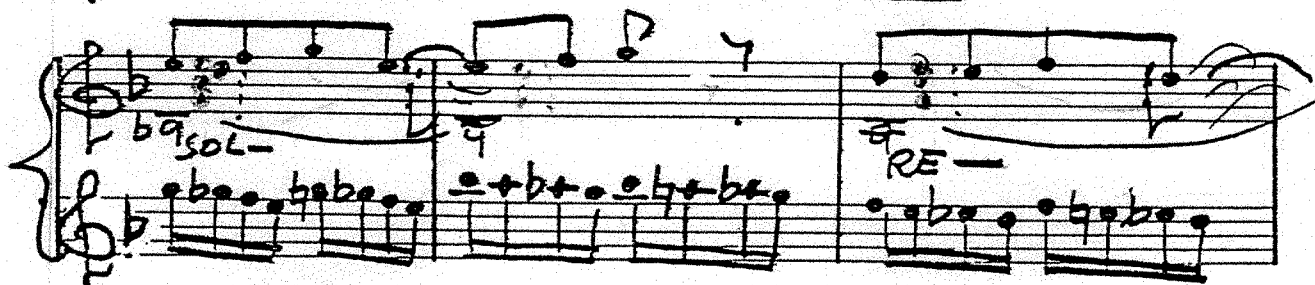
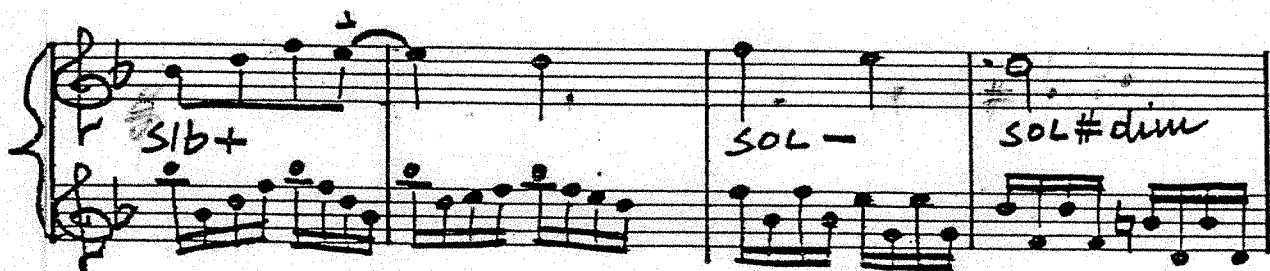
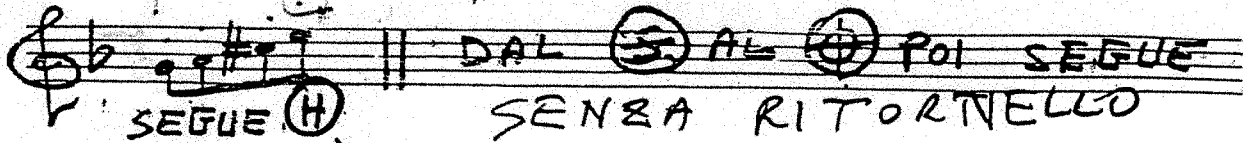
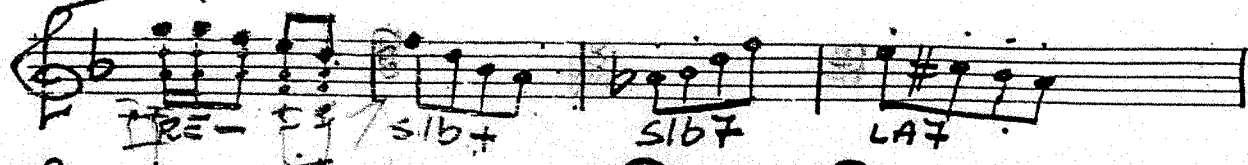
Handwritten musical score for the fourth system, featuring a treble and bass staff. The music includes instrumental parts for woodwinds and strings. The tempo is marked "LARGO". There are also vocal lines with lyrics: "RE - RE - RE - 6 sib 7 RE SOL - SOL# diu".

Handwritten musical score for the fifth system, featuring a treble and bass staff. The music includes instrumental parts for woodwinds and strings. The tempo is marked "LARGO". There are also vocal lines with lyrics: "RE - RE - RE - 6 sib 7 RE SOL - SOL# diu".

Handwritten musical score for the sixth system, featuring a treble and bass staff. The music includes instrumental parts for woodwinds and strings. The tempo is marked "LARGO". There are also vocal lines with lyrics: "RE - RE - RE - 6 sib 7 RE SOL - SOL# diu".

[illegible]

# 3 MUSICA DI LAURO MOLINARI



Handwritten musical score for a symphony orchestra, featuring multiple staves with notes, rests, and various annotations.

**Annotations and Markings:**

- Top Staff:** 4/4 time signature, key signature of two flats (B-flat, E-flat). Includes a "Sib+" marking.
- Second Staff:** Key signature change to two sharps (F-sharp, C-sharp). Includes a "Rall." (Ritardando) marking.
- Third Staff:** Marked "TEMA". Includes notes labeled "RE-", "SOL", and "LA7".
- Fourth Staff:** Notes labeled "RE-", "RE-", "SOL", and "A".
- Fifth Staff:** Notes labeled "LA7" and "RE-".
- Sixth Staff:** Marked "VELOCE (M)". Time signature changes to 2/4.
- Seventh Staff:** Marked "(N) ORCHESTRA TROMBE". Includes notes labeled "LAG-".
- Eighth Staff:** Marked "RE+ FISAR. 2.V. VARIAZ.". Includes notes labeled "FA#7".



Handwritten musical score for "The Rose Tree". The score is written on two staves, treble and bass clef, with a key signature of one sharp (F#) and a common time signature (C). The melody is written in the treble clef, and the accompaniment is in the bass clef. The piece consists of three measures. The first measure has a large number "5" written above the treble staff. The second measure has the text "is 7" written below the bass staff. The third measure is empty. The score is written in ink on a piece of paper with a vertical crease down the middle.

Handwritten musical notation for a piano piece. It features a grand staff with treble and bass clefs, a key signature of two sharps (F# and C#), and a 3/4 time signature. The melody is written in the treble clef, and the accompaniment is in the bass clef. The piece is divided into three measures. The first measure has a melodic line starting on G4 and a bass line starting on G3. The second measure has a melodic line starting on A4 and a bass line starting on A3. The third measure has a melodic line starting on B4 and a bass line starting on B3. The notation includes various note values, rests, and accidentals.

A handwritten musical score for the song "The Rose Tree". The score is written on two staves, both using treble clefs and a key signature of two sharps (F# and C#). The melody is written on the upper staff, and the accompaniment is written on the lower staff. The melody consists of a series of eighth and sixteenth notes, with a final measure containing a whole note. The accompaniment is written in a dense, blocky style, with many beamed notes. A large bracket on the left side of the lower staff indicates that it is the accompaniment. The title "The Rose Tree" is written in a decorative, cursive font at the top of the page. The number "12" is written in the bottom right corner.

Handwritten musical score for a piano piece. The score is written on two staves. The key signature is one sharp (F#) and the time signature is 2/4. The tempo/mood is marked "I. 2. V.". The first staff contains the melody, and the second staff contains the accompaniment. The melody includes the lyrics "mi- mi-6 LA 3 LA 3-".

[illegible]

Handwritten musical notation for the phrase "RE + mi b + RE + mi b + RE + mi b +". The notation is written on a grand staff (treble and bass clefs) with a key signature of two sharps (F# and C#). The melody is written in the treble clef, and the bass line is written in the bass clef. The notes are: RE (quarter note), mi (quarter note), b (quarter note), + (quarter rest), RE (quarter note), mi (quarter note), b (quarter note), + (quarter rest), RE (quarter note), mi (quarter note), b (quarter note), + (quarter rest), RE (quarter note), mi (quarter note), b (quarter note), + (quarter rest). The notes are written in a simple, handwritten style.

Handwritten musical score for a piano piece. The key signature is D major (two sharps). The score consists of four measures. The first measure is marked with a circled 'G' and a circled 'P'. The second measure is marked with a circled 'R'. The third measure is marked with a circled 'A'. The fourth measure is marked with a circled 'A' and the word 'SEGUE' written above it. The notation includes treble and bass staves with various notes, rests, and dynamic markings such as 'RE+|', 'cresc.', and 'RE+|'. A large bracket connects the end of the first system to the beginning of the second system.

Handwritten musical score for a piano piece. The key signature is D major (two sharps). The score consists of four measures. The first measure is marked with a circled 'R'. The notation includes treble and bass staves with various notes, rests, and dynamic markings such as 'Vio', 'mib', 'cresc.', and 'RE+|'. A large bracket connects the end of the first system to the beginning of the second system.

Handwritten musical score for a piano piece. The key signature is D major (two sharps). The score consists of three measures. The first measure is marked with a circled 'R'. The notation includes treble and bass staves with various notes, rests, and dynamic markings such as 'RE+|', 'cresc.', and 'RE+|'. A large bracket connects the end of the first system to the beginning of the second system.

DEPOSITATO